

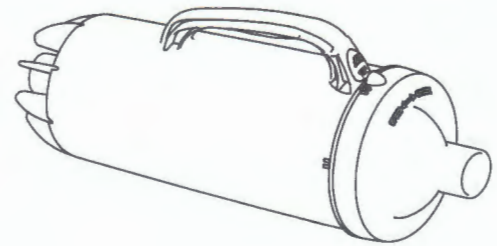
# Professional In-line Pool Leaf Canister with Large Mesh Bag

## USP LC-647

### Leaf Canister Installation Guide

The Leaf Canister has been designed to assist the pool owner and service technician in cleaning pools where small debris, leaves, twigs, rocks, etc., are present in the pool. This canister can be used with a manual vacuum and suction type automatic pool cleaner.

Contents:		
Description		Quantity
Leaf Canister		1
Basket		1
Mesh Net		1
Hose – Type B Adaptors		
Flexi Adaptor		1
Male-Male Leader		1
Continuous Hose Joiner		1



### Hose application for:

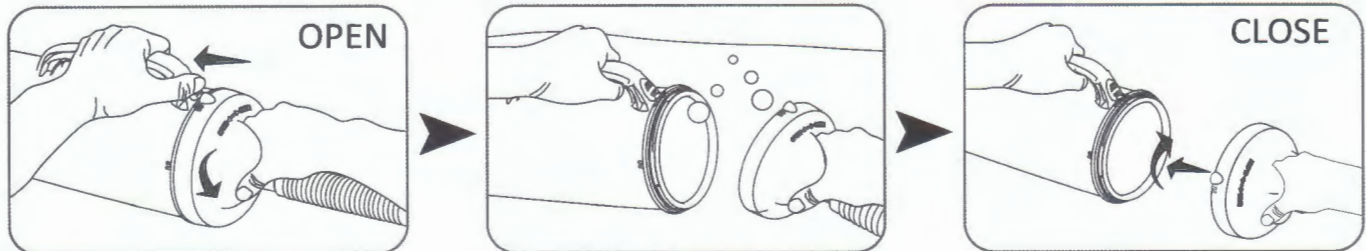
Type A Hose: No adaptors required - Lid = Type A Female and Body = Type A Male

Type B Hose: Attach flexi Adaptor to body connection and 9.5 in male-male leader hose to lid

Automatic Continuous Hose: Attach hose joiner to the lid of the leaf canister to suit 1.5 in Automatic Continuous hose

### How to install Leaf Canister

1. Turn off pump
2. Refer to hose application guide for correct adaptors (if required for step 3)
3. Disconnect the first and second section of pool cleaner hose from the skimmer box or suction fitting and using the correct adaptor (if required) connect to body of the Leaf Canister.
4. Attached male-male leader to lid (if required) then connect remaining male-female pool cleaner hose to automatic pool cleaner.
- a. If hose is continuous, you may need to cut the hose to from the skimmer box and use hose joiner to connect to lid of the leaf canister.
5. Ensure to purge all air from hose and leaf canister before use. To open canister depress latch on handle and turn in "open" direction to open lid. Submerge Leaf Canister until filled with water. With Leaf Canister still under water, turn lid in "close" direction and close until you hear it "click" into place.

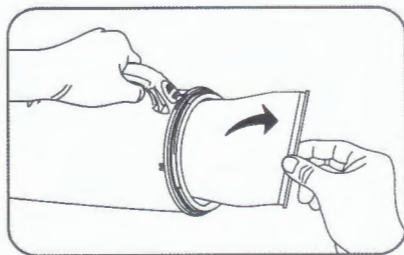


6. Check all hoses are connected to skimmer or suction fitting and pool cleaner before turning pump back on.

### How to clean Leaf Canister

The Leaf Canister can be serviced while still in the pool without disconnecting the hoses.

1. First tilt the Leaf Canister lid end upward to allow any debris to settle inside the basket/net.
2. Turn off pump. Depress latch on handle and turn the lid in "open" direction to open lid. Remove basket/net for cleaning.



3. Check O-Ring on Canister body and clean or replace as necessary. Lubricate with Aussie Gold Super Lube Silicone only. Do not use any petroleum based product.
4. After cleaning basket/net, put the basket/net into the main body and turn the lid in "close" direction to close.

#### Type A

Female Cuff  Male Cuff

#### Type B

Female Cuff  Male Cuff