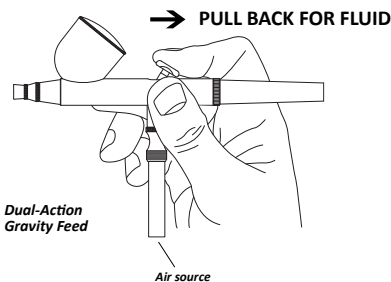
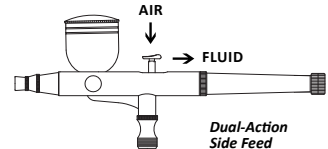
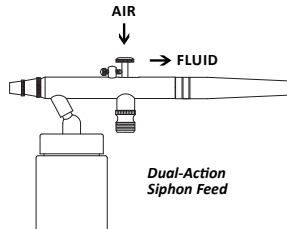
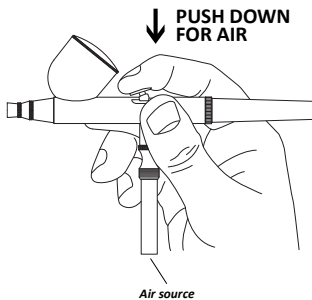


MASTER®

AIRBRUSH PRO SERIES

AIRBRUSH QUICK START GUIDE

For further specific detailed instruction and information for each model of Master and Master Airbrush Pro Airbrushes, please go to www.airbrushresourcecenter.com



Dual-action airbrushes are the most widely used style of airbrush, as they allow the user to have superior control of the air flow, fluid flow and spray pattern. The three main dual-action airbrush types are Gravity Feed, Siphon Feed and Side Feed.

DUAL-ACTION refers to the triggering method of activating the airbrush, as pressing down on the trigger releases the air flow and drawing back on the trigger releases the paint flow. Since a dual-action airbrush combines the two separate motions of the trigger into a single control, it makes it much easier for the user to achieve consistent fine detail line spraying results.

Getting Set Up

Make sure that you securely connect one end of an air hose to the air inlet of the airbrush and the other end of the hose to a compressor. Remember to always wear a dust mask or respirator for solvent based paint, while airbrushing.

Holding and Triggering a Dual-Action Airbrush

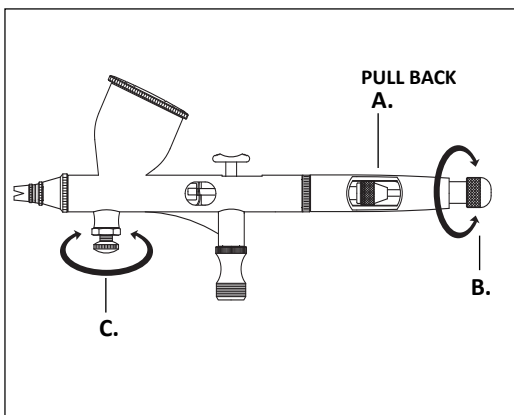
Hold the airbrush like you would hold a pen with your index finger on the trigger for control. For a dual-action airbrush press down on the trigger for air flow and while the trigger is pushed down pull back on it to release paint flow.

Fundamental Airbrushing Techniques for Best Results

When using your airbrush, spraying distance, application speed, airbrush angle and air pressure are the key principles to consistently achieving the best airbrush spraying results. To get comfortable using the airbrush, practice spraying with it at different distances and spray angles, while also adjusting your speed of application and air pressure.

(For airbrushing practice exercises and detailed step by step airbrush tips, tricks and video guides visit www.airbrushresourcecenter.com)

Special Features Available on Some Models of Master and Master Airbrush Pro Airbrushes



A. Quick Flush Cutaway Handle

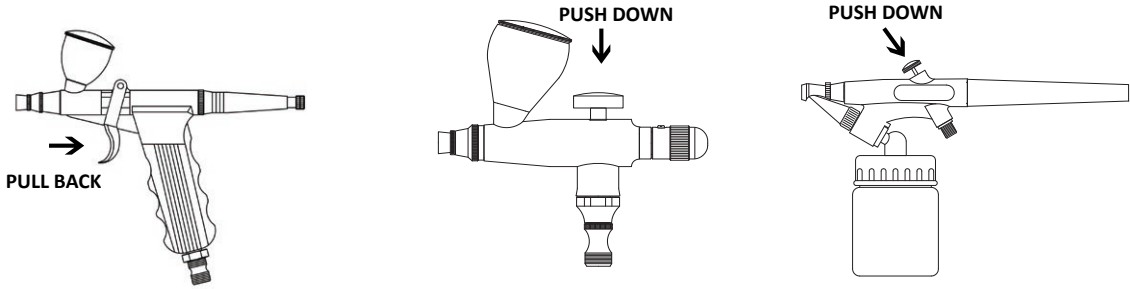
The cutaway handle allows you to pull the needle chucking nut back to quickly flush and clean fluid passages within the airbrush.

B. Preset Knob Handle

The handles preset fluid control knob allows you to set the limit on the travel distance of the airbrush trigger. This enables complete control of paint flow, so you can spray consistent repeatable lines.

C. Micro Airflow Adjustment Control Valve

A specialized air control valve at the head of the airbrush that can be adjusted to lower the air flow (psi), which enables accurate micro fine spray control.



Pistol Trigger Airbrush	Single-Action Airbrush	Single-Action External Mix Airbrush
<p>Pistol trigger airbrushes give you the feel of a spray gun trigger, while providing you with the accurate spray control of an airbrush. Some of our pistol trigger airbrushes have a fixed dual-action feature where pulling slightly back on the trigger releases the air flow only, then a further pull back of the trigger releases the paint flow.</p>	<p>Single-action airbrushes are easy to operate, as a simple push down on the trigger activates both the air flow and paint flow. This one step triggering makes single-action airbrushes ideal for beginners, although they do not provide as much spray control as dual-action airbrushes.</p>	<p>An external mix airbrush is called that because the air and paint mix in front of the needle. How much paint spray comes out is controlled through a knob located near the tip of the airbrush. A single-action only requires a simple push down on the trigger to activate both the air flow and paint flow.</p>

Cleaning the Airbrush

Before cleaning the airbrush always empty the excess paint first, and always clean the airbrush between color changes and at the end of each painting session. Adding a new color to the airbrush without cleaning it will lead to color contamination from the previous color. To prevent the airbrush from getting clogged, never allow paint to dry inside of the airbrush. Refill the airbrush cup or bottle using the appropriate cleaning solution for the type of paint medium that was used in the airbrush. Warm water works for most water-based mediums. Flush out the airbrush by back flushing (plugging the tip of the brush while pulling the trigger back) and spray out until airbrush sprays clear.



Airbrush Resource Center is the Go-To Source for Everything You Need to Know About Airbrushing!

www.airbrushresourcecenter.com

- How to airbrush guides, eBooklets and videos
- Step by step airbrush tips, tricks and videos
- Product information and usage manuals
- Exploded view diagrams of each airbrush model
- Replacement parts, repairs kits and accessories
- Airbrush maintenance and cleaning
- Airbrush disassembly and reassembly
- Troubleshooting procedures
- Warranty information
- FAQ - frequently asked questions

For additional in-depth airbrush instructions and support information for each Model of Master and Master Airbrush Pro Airbrush, visit www.airbrushresourcecenter.com

For quick personalized solutions provided by our trained professionals, call: (858) 909-2110



Master Airbrush offers a complete professional line of value priced precision airbrushes that provide exceptional atomization and accurate spray control. Master Airbrush has multiple levels of airbrushes to fit all levels of users, all types of spray applications and all forms of spray media.



Master Airbrush Pro is a new series of superior quality airbrushes that provide the user with an elite level of spraying performance! Durable finely tuned airbrushes, built with the highest quality materials, and designed to be used by those that desire the perfect results every time!

For more information about Master or Master Airbrush Pro Series Airbrushes, visit www.usartsupply.com or www.tcpglobal.com

 **WARNING:** Cancer or reproductive harm. www.P65Warnings.ca.gov