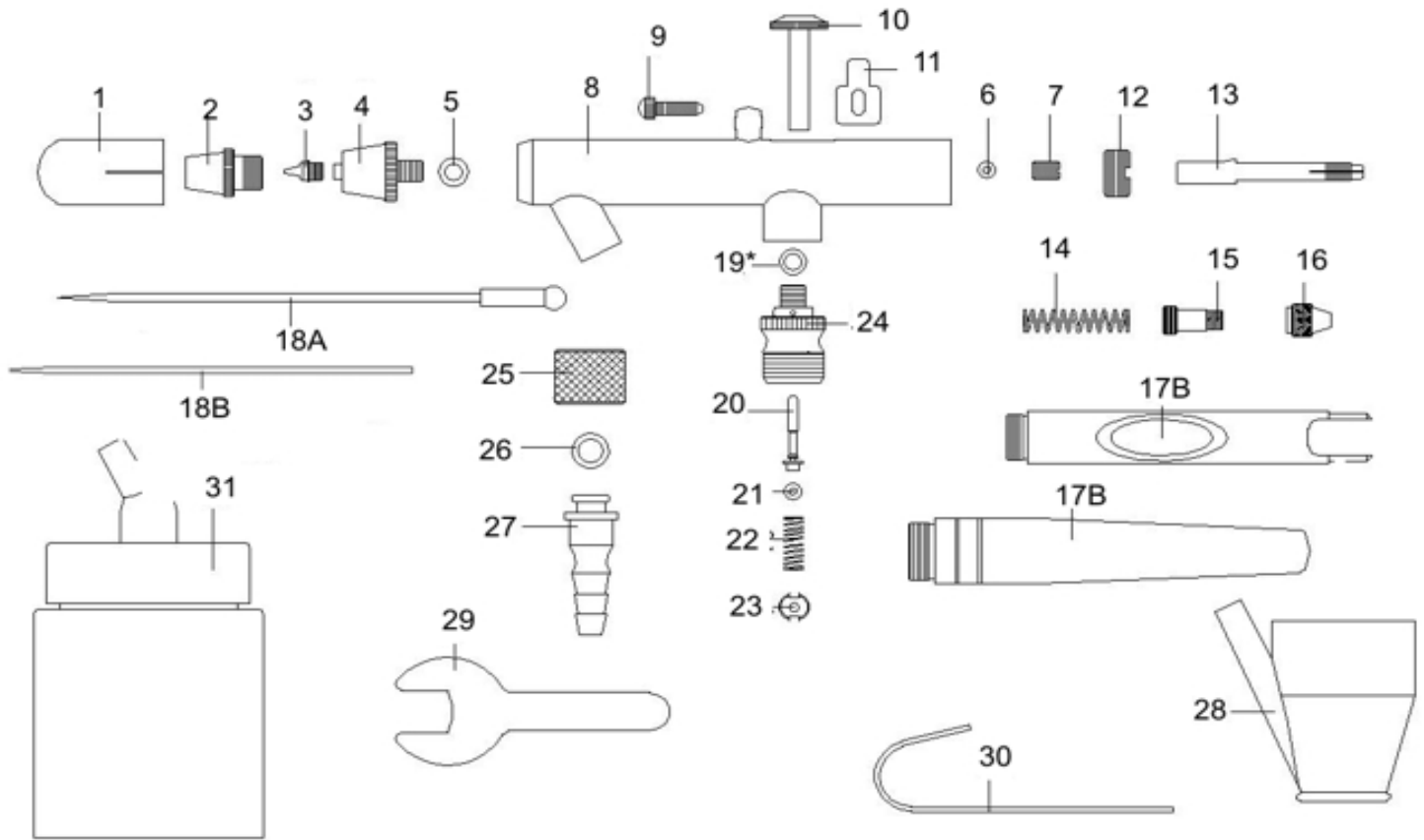


Master Airbrush Brand - Model S66, S66-Set & S68

Precision Dual-Action Siphon Feed Airbrush

Parts Breakdown



#	Part Description	Part #	#	Part Description	Part #	#	Part Description	Part #
1	Protective Cap	P68-1	12	Needle Adj. Sleeve	P68-12	21	O-Ring, Air Valve Rod	P68-21
2	Air Cap	P68-2	13	Needle Chucking Guide	P68-13	22	Air Valve Spring	P68-22
3	Nozzle	P68-3	14	Spring	P68-14	23	Air Valve Screw	P68-23
4	Air Cap Body	P68-4	15	Needle Chucking Screw	P68-15	24	Air Valve Body	P68-24
5	Air Cap Body O-Ring	P68-5	16	Needle Chucking Nut	P68-16	25	Hose Connector Nut	P68-25
6	Needle Packing	P68-6	17A	Needle Handle-Solid S68	P68-17A	26	Hose O-Ring Connector	P68-26
7	Needle Packing Nut	P68-7	17B	Needle Handle-Open S66	P68-17B	27	Hose Connector Barb	P68-27
8	Air Brush Body	P68-8	18A	Needle .35mm for S68	P68-18A	28	5cc Metal Cup	P68-28
9	Trigger Limit Adj. Screw	P68-9	18B	Needle .35mm for S66	P68-18B	29	7mm Wrench	P68-29
10	Trigger	P68-10	19	O-Ring, Air Valve Body	P68-19	30	Metal Airbrush Hanger	P68-30
11	Secondary Lever Guide	P68-11	20	Air Valve Rod	P68-20	31	22cc Glass Jar Assembly	P68-31

**Parts for Master Airbrush are in stock at our TCP Global Warehouses
and are available at our website:**

www.TCPGlobal.com

Support is available at **(858) 909-2110** or by email at **Support@tcpglobal.com**

Visit us at **www.TCPGlobal.com** for all of your airbrushing supplies

We have the Most Complete Airbrush Center on the Web!



WARNING: This product contains one or more chemicals known to the state of California to cause cancer and birth defects or other reproductive harm.

www.P65Warnings.ca.gov