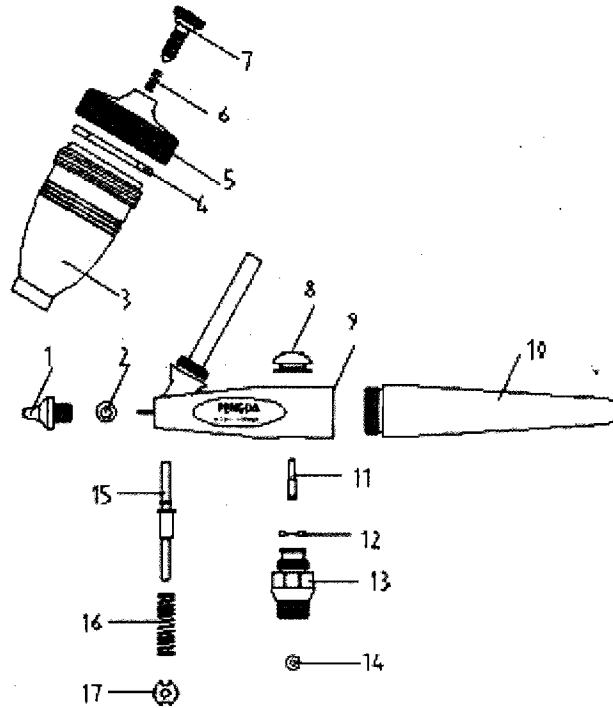


Master Airbrush Brand - Model G78

Single-Action Gravity Feed Air Abrasive & Etching Airbrush Gun

Parts Breakdown

#	Part Description	Part #
1	Nozzle	P78-1
2	O-Ring	P78-2
3	Cup	P78-3
4	Seal Up	P78-4
5	Cup Cover	P78-5
6	Spring	P78-6
7	Screw	P78-7
8	Finger Button	P78-8
9	Body	P78-9
10	Handle	P78-10
11	Screw	P78-11
12	O-Ring	P78-12
13	Valve Body	P78-13
14	O-Ring	P78-14
15	Needle Chucking Nut	P78-15
16	Standard Handle	P78-16
17	Needle Adj. Screw	P78-17



Parts for Master Airbrush are in stock at our TCP Global Warehouses and are available at our website:

www.TCPGlobal.com/AirbrushDepot

Support is available at (858) 909-2110 or by email at Support@tcpglobal.com

Visit us at www.TCPGlobal.com/AirbrushDepot for all of your airbrushing supplies

We have the Most Complete Airbrush Center on the Web!

WARNING: This product contains a chemical known to the state of California to cause cancer and birth defects or other reproductive harm.



**Value Priced Precision Airbrushes
that Provide Exceptional Atomization and
Accurate Spray Control**

**Master Airbrush Brand - Model G78
Single-Action Gravity Feed Air Abrasive & Etching Airbrush Gun**

Applications:

The Air Abrasive & Etching Airbrush Gun is a versatile instrument that can erase color errors and act as an etching tool. It is used by hobbyists and manufacturers to clean jewelry and fine parts, remove discoloration, rust, corrosion, etch glass, or cut monograms. It is issued by lithographers to highlight half tones and erase defects without marring the surface or leaving a smudge. It is used extensively by model railroaders for weathering railcars and accessories.

Operation:

For general erasing, clean dry air at pressures of 30 to 45 PSI may be used. To be sure of satisfactory performance a Moisture Trap or Regulator with Moisture Trap should be used to remove, within their rated capacity, water oil and other impurities from your source of air supply. Air compressors with a air supply tank are recommended. Expect a slight trickle of abrasive to flow out after the button has released. This is caused by air pressure in the cup being relieved.

1. Attach air hose coupling to Valve Casing
2. Unscrew Cover
3. Fill cup 3/4 full with clean dry sand, tighten cover securely.
4. To prevent leaks, do not get any abrasive on the cup threads
5. Regulate air pressure for erasing on paper surfaces to approximately 30 PSI. Use a higher air pressure of 45 to 65 PSI for metal, gold castings, plastic or glass work.
6. Hold the Model G78 the way you would a pencil. Move the Model G78 with the Tip about 1/8" to 1/2" above the work surface. Adjust to achieve results desired.
7. Adjust Control Screw to the lowest point to avoid excessive use of abrasive.
8. For work requiring fast, heavy abrasive cutting, use Fast Cutting Abrasive and high air pressure. Hold tip of the Model G78 very close to the working surface to cut faster. Hold at a distance for blending and broad coverage.

WARNING: Maximum Air Pressure 65 PSI

**Parts for Master Airbrush are in stock at our TCP Global Warehouses
and are available at our website:**

www.TCPGlobal.com/AirbrushDepot

Support is available at (858) 909-2110 or by email at Support@tcpglobal.com

Visit us at **www.TCPGlobal.com/AirbrushDepot** for all of your airbrushing supplies

We have the Most Complete Airbrush Center on the Web!

WARNING: This product contains a chemical known to the state of California to cause cancer and birth defects or other reproductive harm.