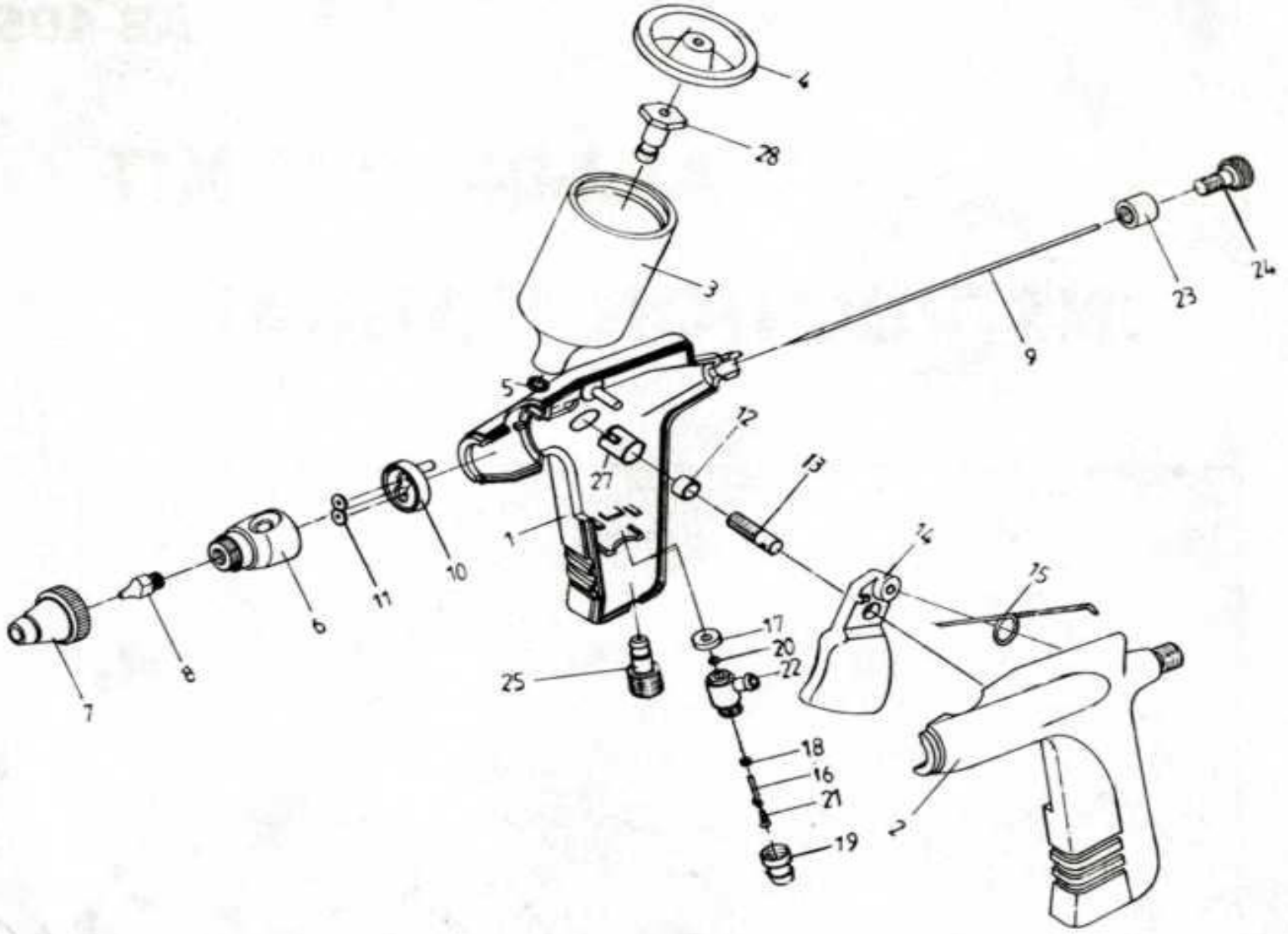


# Master Airbrush Brand - Model G70 & G75

## Parts Breakdown



#	Part Description	Part #	#	Part Description	Part #	#	Part Description	Part #
1	Body Housing Right	P75-1	11	O-Ring	P75-11	22	Valve Housing	P75-22
2	Body Housing Left	P75-2	12	Bushing	P75-12	23	End Cap	P75-23
3	3/4 oz. Gravity Cup	P75-3	13	Adjustment Screw	P75-13	24	Fluid Adjustment Screw	P75-24
3A	2.5 oz. Gravity Cup	P75-3A	14	Trigger	P75-14	25	Inlet	P75-25
4	Gravity Cup Lid	P75-4	15	Trigger Spring	P75-15	26	Hose Assembly	P75-26
5	O-Ring	P75-5	16	Plunger	P75-16	27	Adjustment Screw Nut	P75-27
6	Nozzle Seat	P75-6	17	Valve Upper End Cap	P75-17	28	Fluid Inlet Screw	P75-28
7	Fluid Cap	P75-7	18	O-Ring	P75-18	29	Air Regulator Valve	P75-29
8	Nozzle .3mm	P75-8	19	Valve Lower End Cap	P75-19	30	Air Hose Adapter	P75-30
9	Needle	P75-9	20	O-Ring	P75-20			
10	Nozzle Seat Cap	P75-10	21	Plunger Spring	P75-21			

[www.TCPglobal.com](http://www.TCPglobal.com)

Support is available at (858) 909-2130 or by email at [Support@tcpglobal.com](mailto:Support@tcpglobal.com)

Visit us at [www.TCPglobal.com](http://www.TCPglobal.com) for all your airbrush supplies, as we have the  
**Most Complete Airbrush Center on the Worldwide Web!**