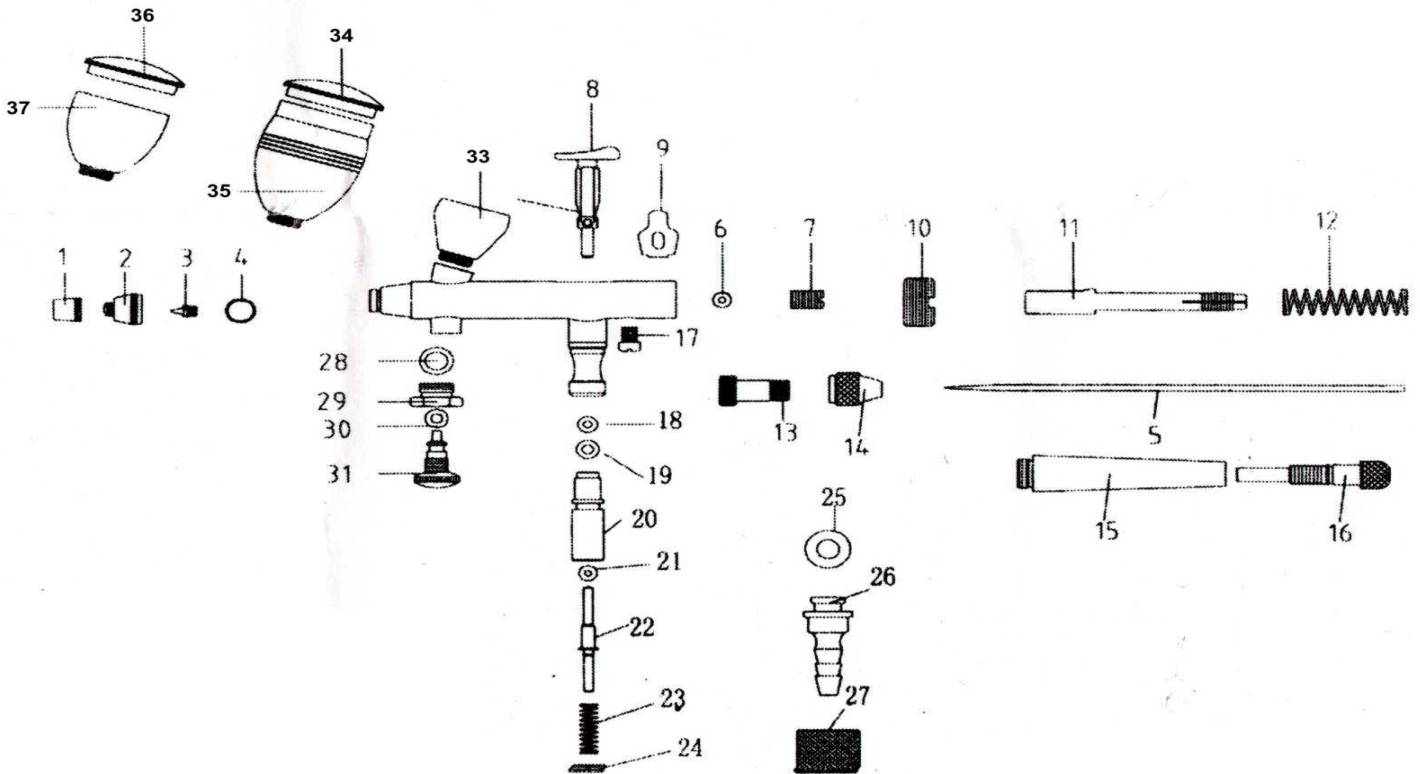


Master Airbrush Brand - Model G46

Parts Breakdown



#	Part Description	Part #	#	Part Description	Part #	#	Part Description	Part #
1	Needle Cap	P40-1	13	Spring Case	P40-13	25	Hose Connector Nut	P40-25
2	Nozzle Cap	P40-2	14	Needle Chucking Nut	P40-14	26	Hose Connector O-Ring	P40-26
3	Nozzle .2mm	P40-3	15	Open Chuck Handle, Adj.	P40-15	27	Hose Connector Barb	P40-27
4	Nozzle Cap O-Ring	P40-4	16	Needle Adjusting Screw	P40-16	28	Micro Air Adj. O-Ring	P40-28
5	Needle .2mm	P40-5	17	Guide Lock Screw	P40-17	29	Air Adj. Lock Nut	P40-29
6	Needle Guide O-Ring	P40-6	18	Trigger Plunger O-Ring	P40-18	30	Micro Air Adj. O-Ring	P40-30
7	Needle Guide	P40-7	19	Valve Rod O-Ring	P40-19	31	Micro Valve Air Adj.	P40-31
8	Trigger	P40-8	20	Valve Body	P40-20	33	1/16 oz. Color Cup	P40-33
9	Secondary Lever Guide	P40-9	21	Valve Rod O-Ring	P40-21	34	1/6 oz. Color Cup Lid	P40-34
10	Stopper	P40-10	22	Valve Rod	P40-22	35	1/6 oz. Color Cup	P40-35
11	Needle Chucking Guide	P40-11	23	Valve Rod Spring	P40-23	36	1/2 oz. Color Cup Lid	P40-36
12	Spring	P40-12	24	Valve Spring Screw	P40-24	37	1/2 oz. Color Cup	P40-37

All parts for this Master Airbrush are in stock at our TCPglobal Warehouse and are available at our website:

www.TCPglobal.com

Support is available at (858) 909-2130 or by email at Support@tcpglobal.com

Visit us at www.TCPglobal.com for all your airbrush supplies, as we have the **Most Complete Airbrush Center on the Worldwide Web!**